

MONTHLY MEMBERSHIP PROGRESS REPORT

LOCATION INDIA

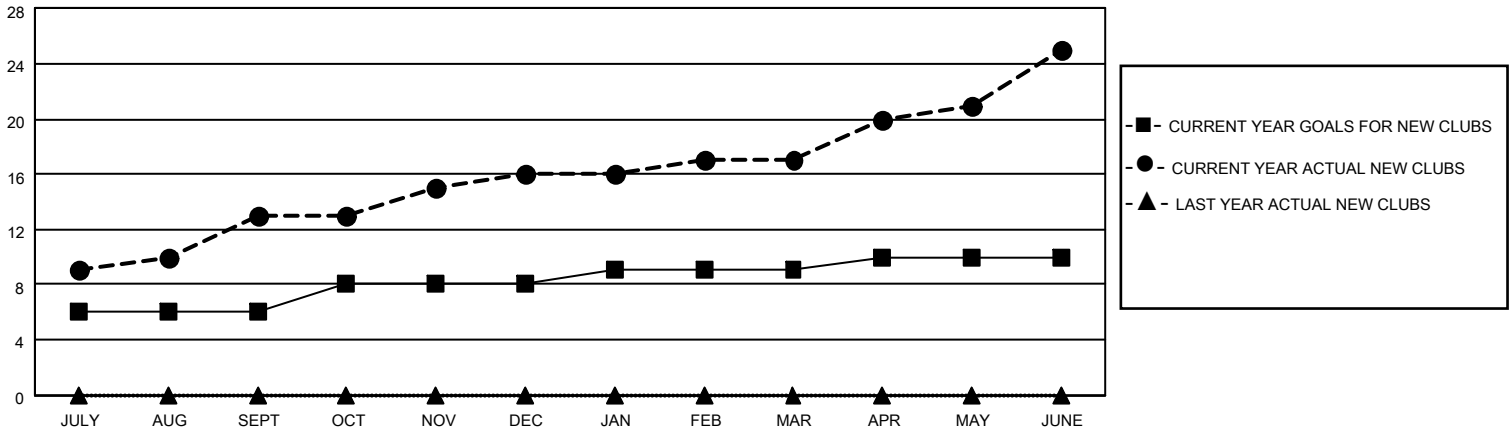
District 324 F

Results as of: 6/30/2022

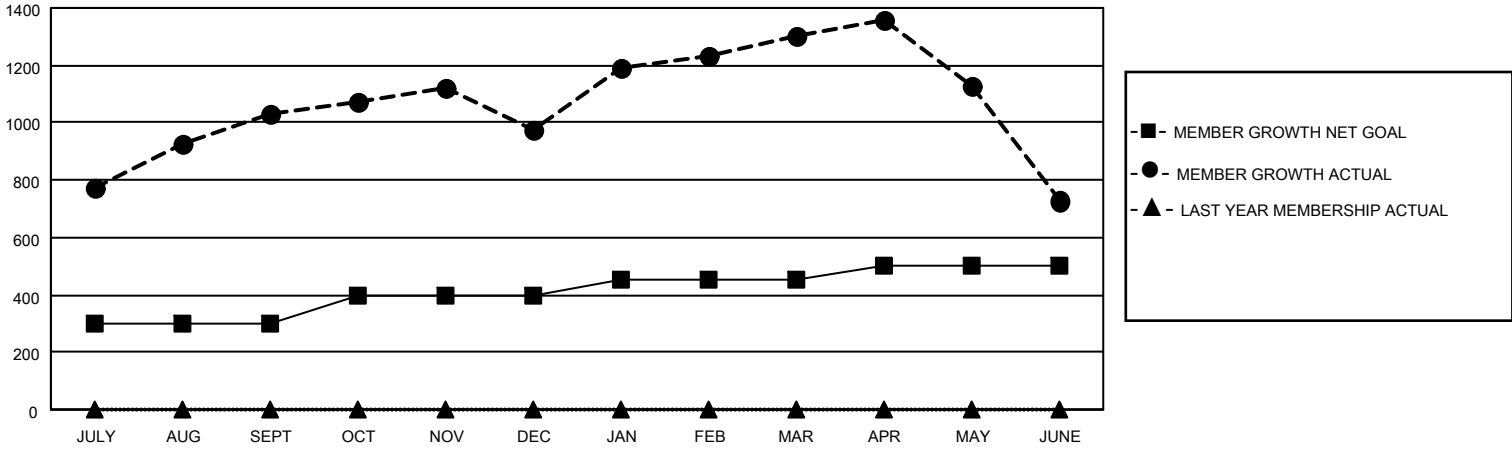
Clubs			
RESULTS FOR 2021-2022			
QUARTER	NEW CLUB GOAL	NEW CLUBS	DROPPED CLUBS
JULY/AUG/SEPT	6	13	0
OCT/NOV/DEC	2	3	3
JAN/FEB/MAR	1	1	1
APR/MAY/JUNE	1	8	0

Members			
RESULTS FOR 2021-2022			
QUARTER	MEMBER GROWTH NET GOAL	MEMBER GROWTH ACTUAL	DROPPED MEMBERS ACTUAL (including transfers)
JULY/AUG/SEPT	300	1266	194
OCT/NOV/DEC	100	262	312
JAN/FEB/MAR	50	463	76
APR/MAY/JUNE	50	679	1,198

GOALS AND ACTUAL NEW CLUBS CUMULATIVE



GOALS AND ACTUAL MEMBERS CUMULATIVE



DROPPED CLUBS: 4

223 CLUBS OF 243 ADDED 1 OR MORE NEW MEMBERS

GENDER DISTRIBUTION

MALE	8,851 (87.62%)
FEMALE	1,251 (12.38%)
NON BINARY	0 (0.00%)
PREFER NOT TO ANSWER	0 (0.00%)

DROPPED MEMBERS

[CLICK HERE FOR CUMULATIVE MEMBERSHIP DATA](#)

DECEASED	77
CLUB CANCELLED	90
OTHER	1,613
TOTAL	1,780

TOTAL FAMILY UNIT MEMBERS 1,850

FAMILY MEMBERS PAYING HALF DUES 1,050